

Ambrogio 4.0 Basic

MD-CO-RO-42- Rev. 1.0 - 01/09/2018 - Ambrogio 4.0 Basic

Spare Parts Catalogue

Previous Revision
Current Revision

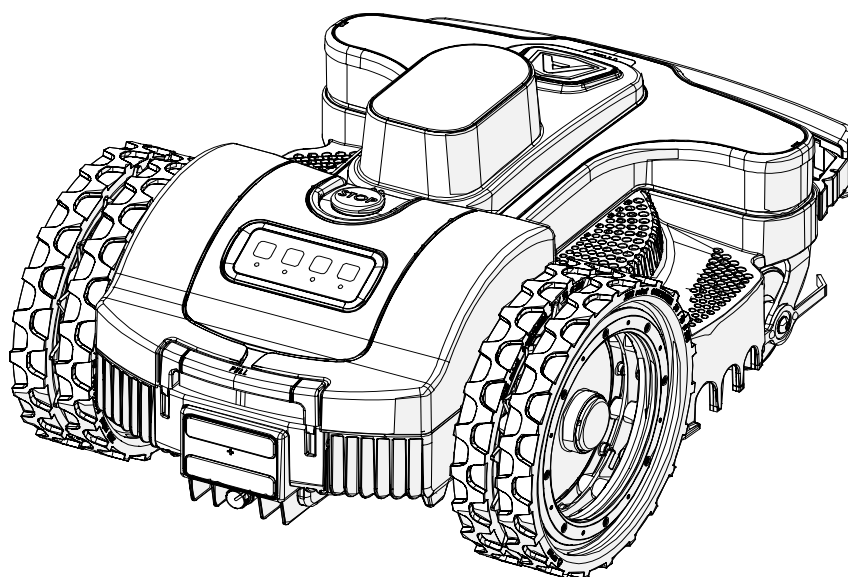
1.0

From

2018-09

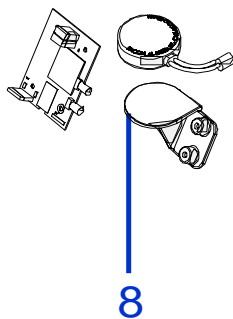
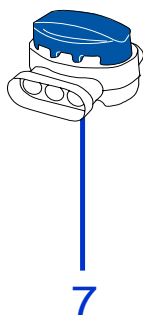
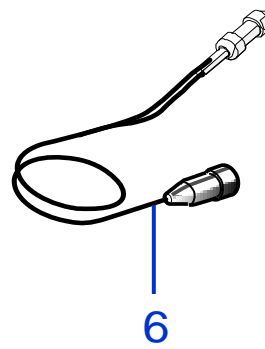
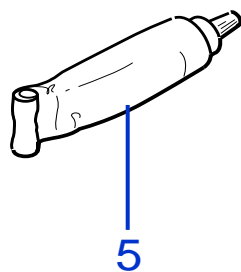
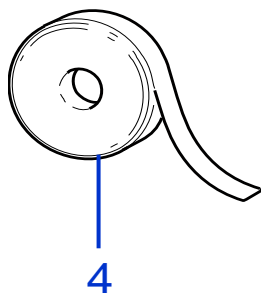
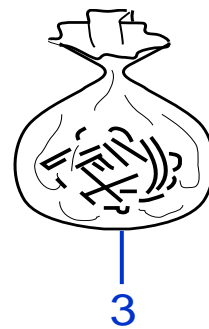
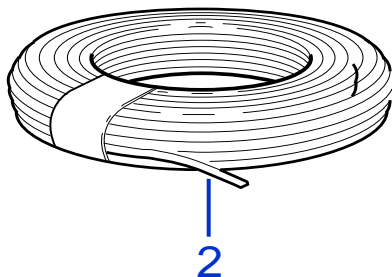
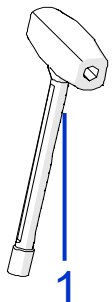
Models Type Included

| | |
|---------|-------------------|
| 8040BA0 | 4.0 Basic Light |
| 8040BA0 | 4.0 Basic Medium |
| 8040BA0 | 4.0 Basic Premium |



Price List. Only for Italy. Delivery cost not included
Listino al pubblico. Trasporto non incluso





Tav. 01 0
 Tab.
 Taf.

| Rif. | Code | Qt.in Robot | | (IT) Descrizione * (GB) Description | MOQ |
|------|-------------|-------------|---------|-------------------------------------|-----|
| 1 | C01416 | 1 | | Chiave - Screwdriver | 1 |
| 2 | CS_E0002OS | 1 | MT 100 | Cavo - Cable | 1 |
| 2 | CS_E0002 | 1 | MT 150 | Cavo - Cable | 1 |
| 2 | CS_E0002_3 | 1 | MT 300 | Cavo - Cable | 1 |
| 2 | CS_E0002_5 | 1 | MT 500 | Cavo - Cable | 1 |
| 2 | CS_E0002_10 | 1 | MT 1000 | Cavo - Cable | 1 |

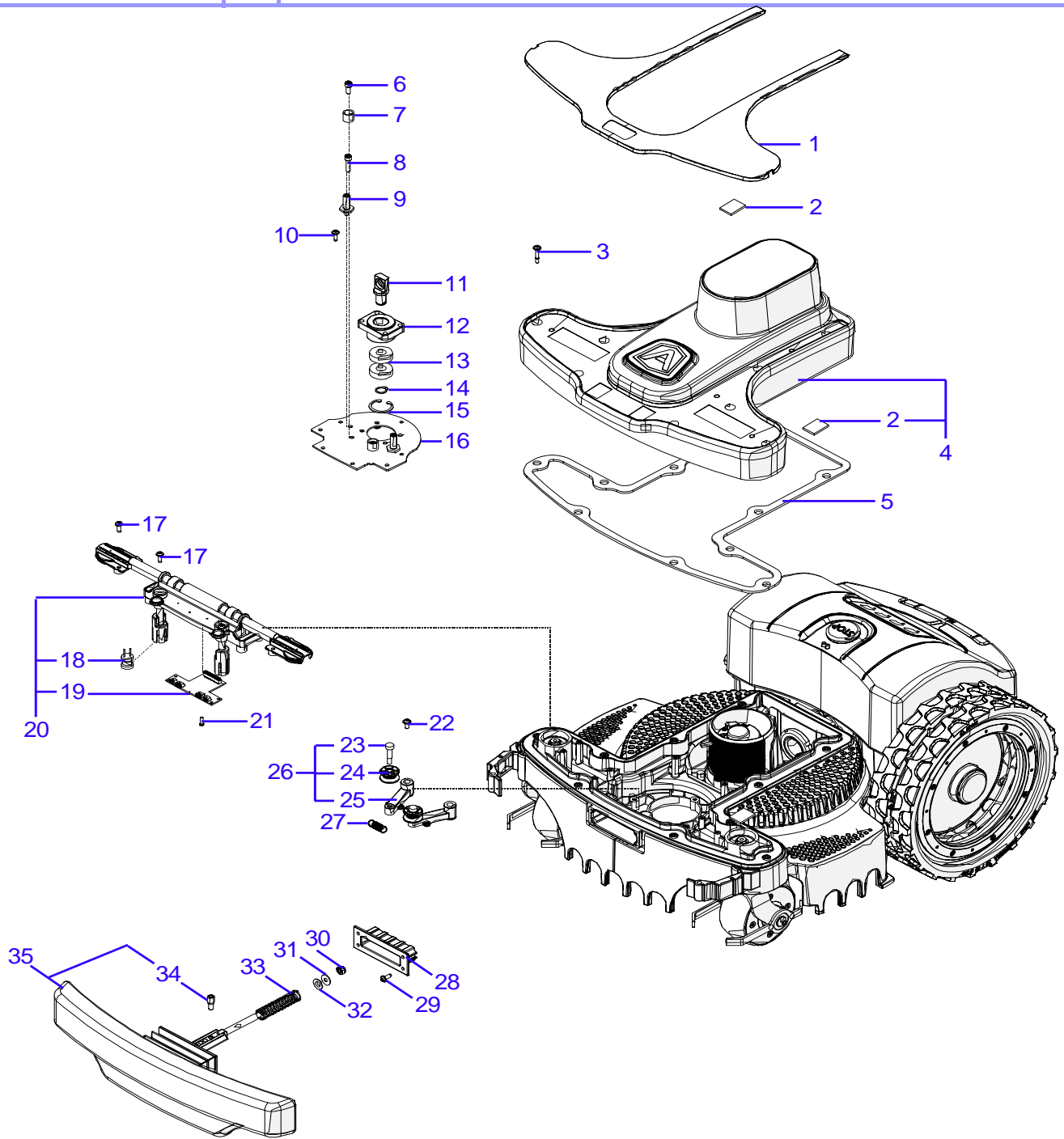
Consegna in 60 giorni dall'ordine - Delivery Time 60 days from order date

| | | | | | |
|---|------------|-----|-----------|---|---|
| 3 | 200A00100A | 0-1 | (100 Pz) | Conf. Chiodi - Nails Bag | 1 |
| 3 | 200A00200A | 0-1 | (200 Pz) | Conf. Chiodi - Nails Bag | 1 |
| 4 | CS_C0111 | 0 | | Nastro Agglomerante - Stretch Electrical Tape | 1 |
| 5 | CS_C0109 | 0 | 200 Gr | Grasso - Grease | 1 |
| 6 | CB01_RICEX | 0 | | Ricarica Esterna - External recharge | 1 |
| 7 | 200A00003 | 1 | | (3pcs) - Connettore - Connector | 1 |
| 7 | 200A00001 | 0 | | (10pcs) - Connettore - Connector | 1 |
| 7 | 200A00050 | 0 | | (50pcs) - Connettore - Connector | 1 |
| 8 | 042Z23000A | 0 | 2G | Kit modulo connect 2G - Connect module kit 2G | 1 |
| 8 | 042Z25000A | 0 | 3G | Kit modulo connect 3G - Connect module kit 3G | 1 |

Solo per rivenditori
 Only for dealer

| Code | (IT) Descrizione * (GB) Description | MOQ |
|-----------|--|-----|
| CS_BT_USB | Convertitore USB-Bluetooth - USB-Bluetooth Converter | 1 |



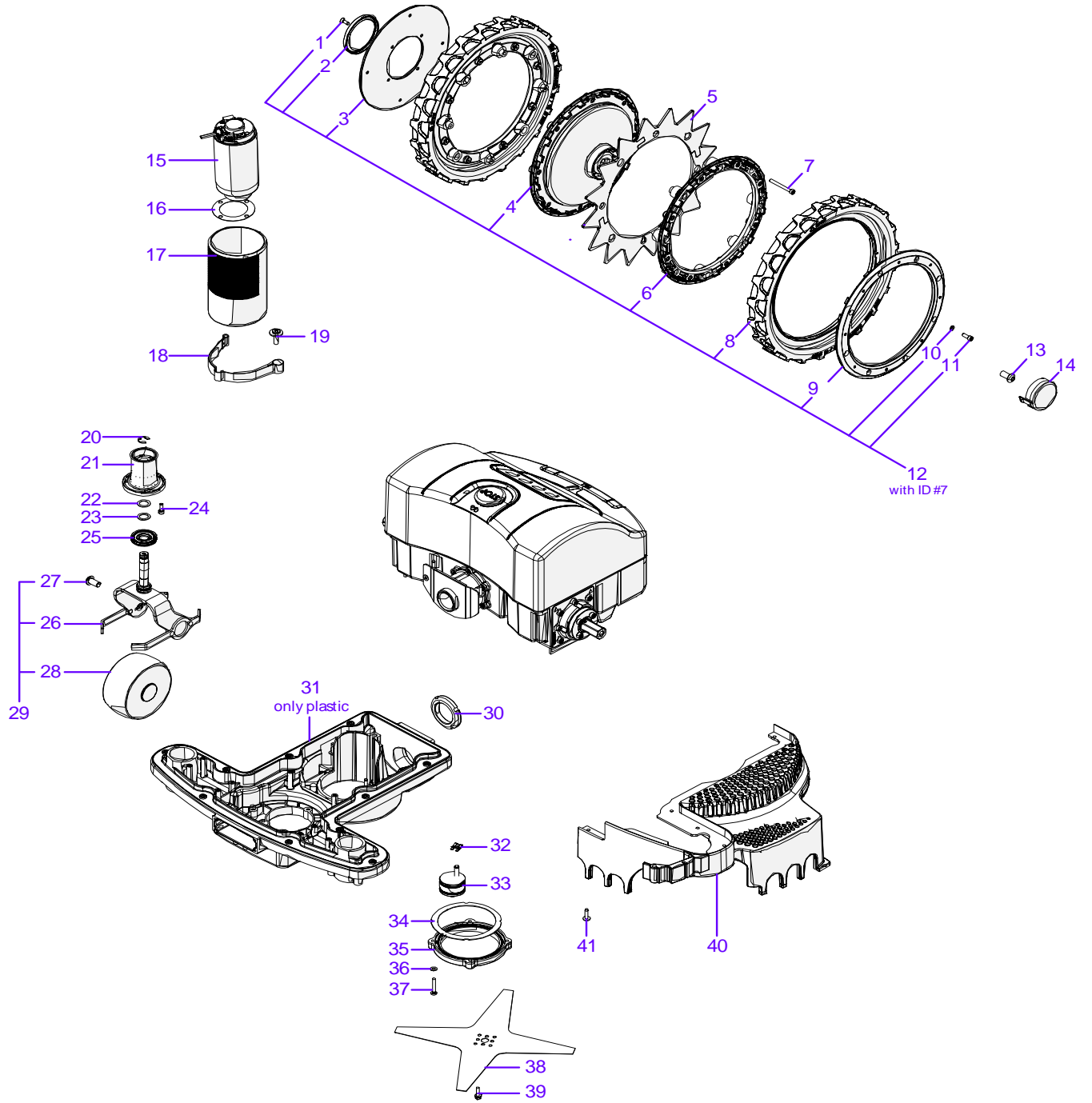


Tav.
Tab.
Taf.

02

0

| Rif. | Code | Qt.in Robot | (IT) Descrizione * (GB) Description | MOQ |
|------|----------------|----------------|--|-----|
| 1 | 042Z20200A | 1 | Copertura viti (Bianco) - Screw cover (White) | 1 |
| 2 | 042Z22600A | 4 | Striscia adesiva - Adhesive strip | 10 |
| 3 | 042Z17800A | 10 | Vite - Screw | 10 |
| 4 | 042Z20300A | 1 | Carter anteriore (Bianco) - Front carter (White) | 1 |
| 5 | 042Z17600A | 1 | Guarnizione frontale - Front gasket | 1 |
| 6 | C02211 | 2 | Vite - Locking ring | 1 |
| 7 | 042Z21100A | 2 | Battuta bumper - Bumper frame | 10 |
| 8 | C02222 | 2 | Vite metrica - Metric screw | 10 |
| 9 | 042Z17500A | 2 | Perno filettato - Thread pivot | 1 |
| 10 | C02177 | 3 | Vite - Screw | 10 |
| 11 | 042Z18700A | 1 | Perno cuscinetto - Bearing pivot | 1 |
| 12 | 042Z01200B | 1 | Supporto cuscinetto - Bearing support | 1 |
| 13 | C00119 | 2 | Cuscinetto - Bearing | 1 |
| 14 | C02171 | 1 | Seger - Seger | 10 |
| 15 | C02203 | 1 | Seger - Seger | 10 |
| 16 | 042Z01100B | 1 | Piastra bumper - Bumper plate | 1 |
| 17 | C02177 | 10 | Vite - Screw | 10 |
| 18 | 046E02000A | 2 | Bobina - Coil | 1 |
| 19 | 042E00100A | 1 | Scheda sensori anteriore - Front sensors board | 1 |
| 20 | 042Z03000A | 1 | Gruppo sensori anteriore - Front sensors group | 1 |
| 21 | C00162 | 4 | Vite - Screw | 10 |
| 22 | C00908 | 2 | Vite - screw | 10 |
| 23 | C02198 | 2 | Vite - Screw | 10 |
| 24 | 042Z17100B | 2 | Rullino bumper - Bumper roll | 1 |
| 25 | 042Z16800B | 2 | Staffa cerniera bumper - Bumper hinge shaft | 1 |
| 26 | 042Z17000B | 2 | Gruppo braccetti bumper - Bumper shafts group | 1 |
| 27 | 042Z01700A | 1 | Molla - Spring | 1 |
| 28 | 042Z16400A | 1 | Protezione soffietto - Bellow protection | 1 |
| 29 | C02177 | 4 | Vite - Screw | 10 |
| 30 | C02223 | 1 | Dado - Nuts | 10 |
| 31 | C01040 | 1 | Rondella - Washer | 10 |
| 32 | 042_IG_0810_03 | 1 | Cuscinetto - Bearing | 1 |
| 33 | 042Z01600A | 1 | Molla - Spring | 1 |
| 34 | 042Z01300B | 1 | Supporto magnete - Magnet support | 1 |
| 35 | 042Z11700A | 1 | Assieme bumper - Bump group | 1 |

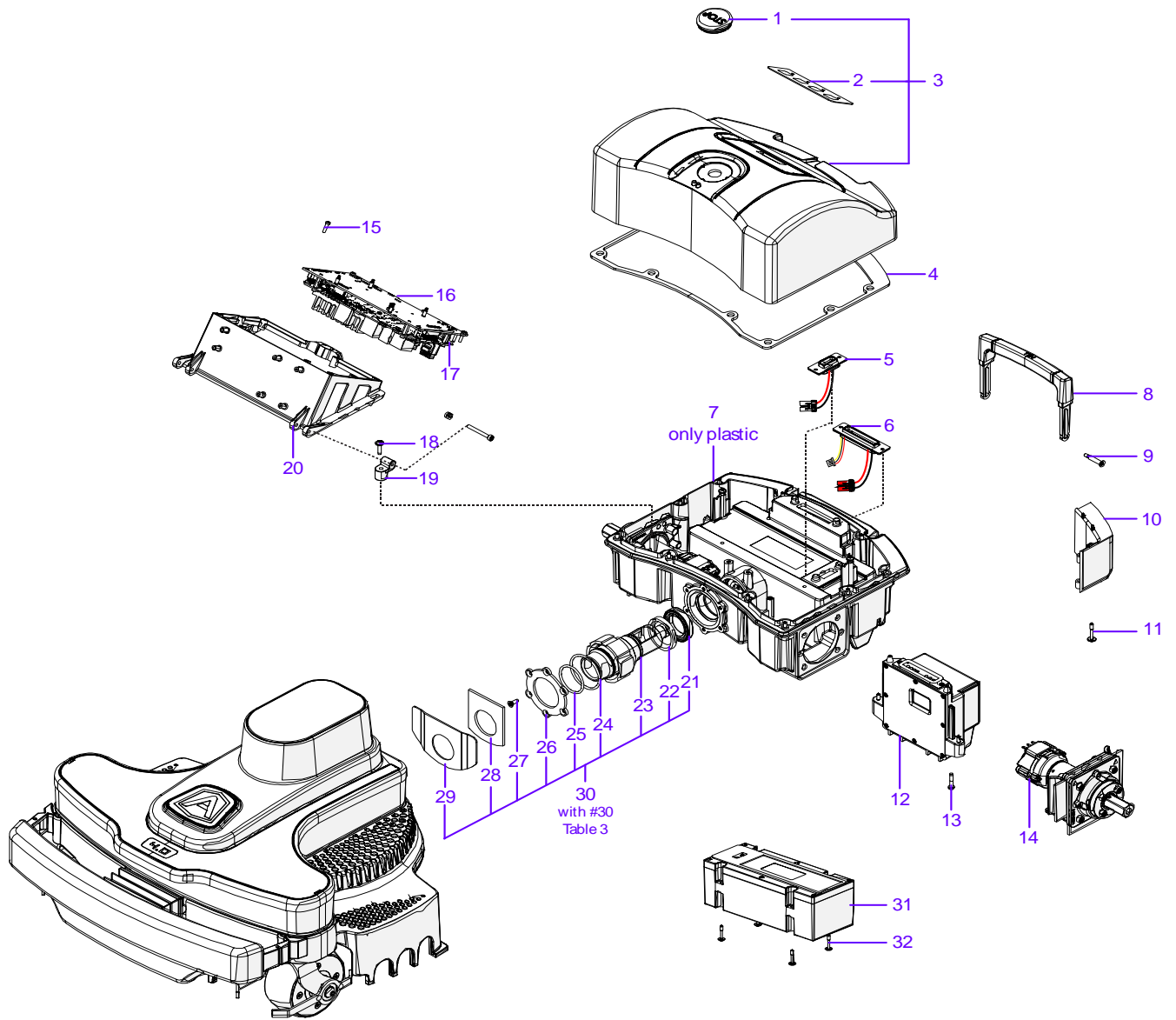


Tav.
Tab.
Taf.

03

0

| Rif. | Code | Qt.in Robot | | (IT) Descrizione * (GB) Description | MOQ | |
|------|------------|----------------|-----------|--|-----|--|
| 1 | C02176 | 16 | | Vite - Screw | 10 | |
| 2 | VCW50625 | 2 | | Oring - Oring | 1 | |
| 3 | 042Z17900A | 2 | | Coperchio ruota interno - Internal wheel cover | 1 | |
| 4 | 042Z11900A | 2 | | Coperchio ruota esterno - External wheel cover | 1 | |
| 5 | 042Z21900A | 2 | | Kit artiglio ruota - Spike wheel kit | 1 | |
| 6 | 042Z12200A | 2 | | Anello interno - Internal ring | 1 | |
| 7 | C02173 | 16 | | Vite - Srew | 10 | |
| 8 | 046Z16400A | 4 | | Copertone - Tire | 1 | |
| 9 | 042Z11600A | 2 | | Anello esterno - Esteranl ring | 1 | |
| 10 | C01837 | 16 | | Rondella - Washer | 10 | |
| 11 | C02172 | 16 | | Vite - Screw | 10 | |
| 12 | 042Z12000A | 2 | | Ruota con copertone - Wheel with tire | 1 | |
| 13 | C02218 | 2 | | Vite - Screw | 10 | |
| 14 | 042Z35600B | 2 | | "A Logo" - Borchia - Boss | 1 | |
| 15 | C02165 | 1 | Brushless | (Brushless) - Motore di Taglio - Group Cutting Motor | 1 | |
| 16 | 051Z15700B | 1 | | Guarnizione - Gasket | 10 | |
| 17 | 200Z18500A | 1 | | Supporto Motore - Motor support | 1 | |
| 18 | 110Z29200A | 1 | | Piastra Elastica - Elastic plate | 1 | |
| 19 | C00691 | 1 | | Vite - Screw | 10 | |
| 20 | CS_C0030 | 2 | | Seger - Seger | 100 | |
| 21 | 051Z31000A | 2 | | Guida albero - Shaft Guide | 1 | |
| 22 | C00616 | 2 | | Rondella - Washer | 10 | |
| 23 | C02049 | 2 | | Rondella - Washer | 10 | |
| 24 | C02172 | 6 | | Vite - Screw | 10 | |
| 25 | 110Z43500A | 2 | | Soffietto - Bellows | 1 | |
| 26 | 042Z13600B | 1 | Right | Forcella - Fork | 1 | |
| 26 | 042Z13901B | 1 | Left | Forcella - Fork | 1 | |
| 27 | C00678 | 2 | | Vite - Screw | 8 | |
| 28 | 110Z34200A | 2 | | (No Magn.) Ruota Anteriore - Front Wheel | 1 | |
| 29 | 042Z13700B | 1 | | Gruppo ruota destro - Right wheel group | 1 | |
| 29 | 042Z14700B | 1 | | Gruppo ruota sinistro - Left wheel group | 1 | |
| 30 | C02211 | 1 | | Vite - Locking ring | 1 | |
| 31 | 042Z06800A | 1 | | Copertura inferiore frontale - Front lowe rcover | 1 | |
| 32 | C01936 | 1 | | Seger - Seger | 10 | |
| 33 | 042Z23000B | 1 | | Piastra fissaggio - Fixing plate | 1 | |
| 34 | 051Z21900B | 1 | | Guarnizione - Gasket | 1 | |
| 35 | 051Z24600B | 1 | | Piastra - Plate | 1 | |
| 36 | C00900 | 4 | | Rondella fissaggio - Fixing washer | 10 | |
| 37 | C00208 | 4 | | Vite - Screw | 100 | |
| 38 | 075Z07800A | 1 | 4K Ø25 cm | Lama piana a 4 Punte - 4 knives flate blade | 1 | |
| 39 | C01322 | 4 | | Vite - Screw | 100 | |
| 40 | 042Z23400A | 1 | Left | Protezione lama - Blade guard | 1 | |
| 40 | 042Z23600A | 1 | Right | Protezione lama - Blade guard | 1 | |
| 41 | C02231 | 20 | | Vite - Screw | 10 | |

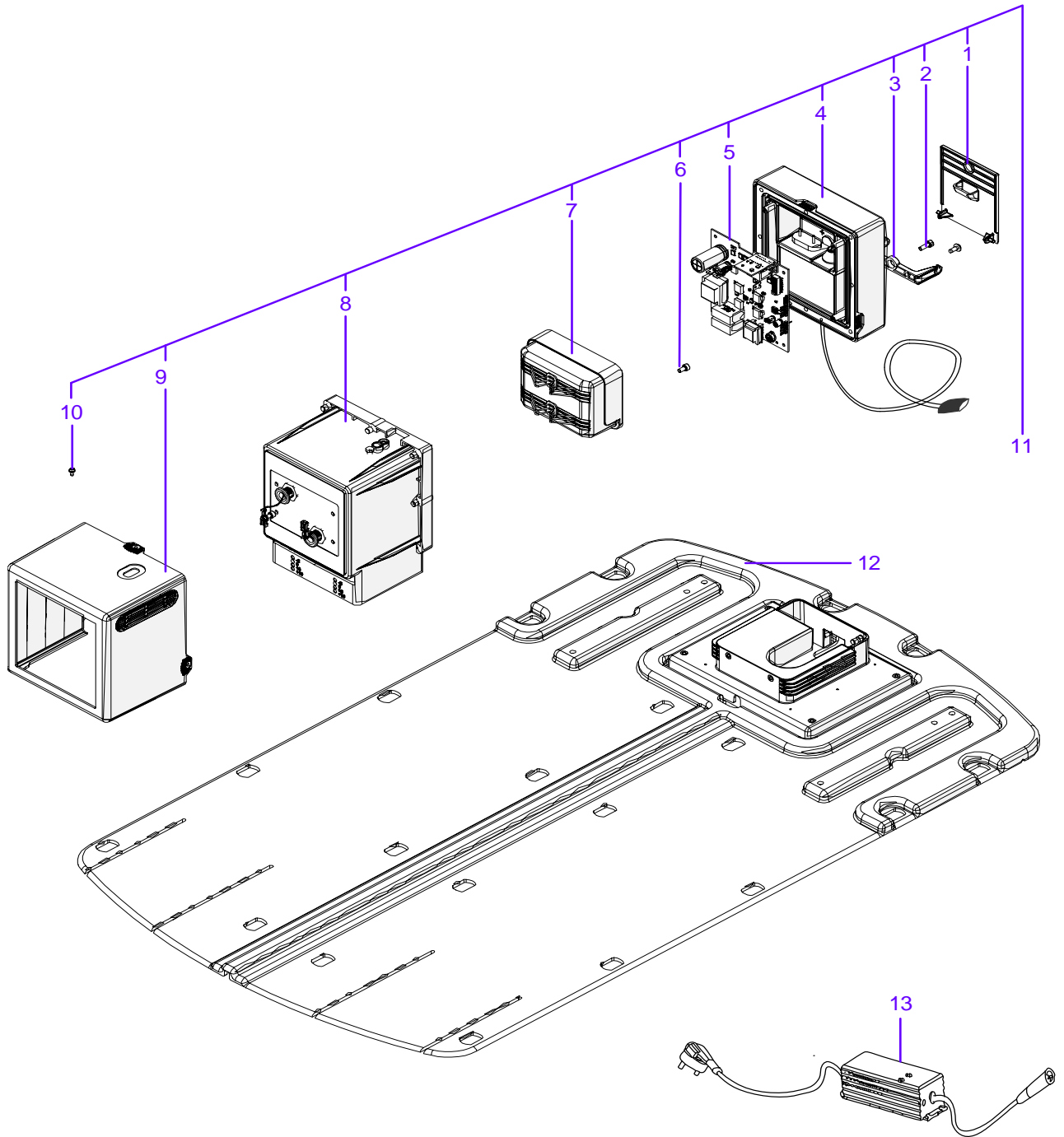


Tav.
Tab.
Taf.

04

0

| Rif. | Code | Qt.in Robot | | (IT) Descrizione * (GB) Description | MOQ | |
|------|--------------|----------------|-------|---|-----|--|
| 1 | 110E01300A | 1 | | Tasto Stop - Stop key | 1 | |
| 2 | 042Z32600A | 1 | | Tastiera - Keyboard | 1 | |
| 3 | 042Z35400A | 1 | | Gruppo carter posteriore (Bianco) - Back carter group (White) | 1 | |
| 4 | 042Z10800A | 1 | | Guarnizione principale posteriore - Back main washer | 1 | |
| 5 | 042CB05.02 | 1 | | Cablaggio batteria - Battery wiring | 1 | |
| 6 | 042CB07.02 | 1 | | Cablaggio ricarica - Recharge Cabling | 1 | |
| 7 | 042Z08600A | 1 | | Copertura inferiore posteriore - Back lower cover | 1 | |
| 8 | 042Z31300A | 1 | | Maniglia - Handle | 1 | |
| 9 | 042Z04600A | 2 | | Vite - Screw | 1 | |
| 10 | 042Z19300A | 1 | Left | Protezione - Protection | 1 | |
| 10 | 042Z19400A | 1 | Right | Protezione - Protection | 1 | |
| 11 | C02272 | 4 | | Vite - Screw | 10 | |
| 12 | 042Z08500A | 1 | | Gruppo ricarica contatto - Contact recharge group | 1 | |
| 13 | 042Z17800A | 10 | | Vite - Screw | 10 | |
| 14 | 042Z22500A | 2 | | (Brushless) - Motoriduttore - Motor Reducer | 1 | |
| 15 | C02177 | 4 | | Vite - Screw | 10 | |
| 16 | 042E40300A | 1 | | Scheda madre - Mother board | 1 | |
| 17 | 110E01100A | 2 | | Cablaggio - Cabling | 1 | |
| 18 | C02231 | 2 | | Vite - Screw | 10 | |
| 19 | 042Z19100A | 2 | | Perno - Pin | 1 | |
| 20 | 042Z08900A | 1 | | Supporto scheda madre - Motherboard Support | 1 | |
| 21 | C02190 | 1 | | Cuscinetto - Bearing | 1 | |
| 22 | 042_PAR_DE55 | 1 | | Guarnizione - Gasket | 1 | |
| 23 | 042Z04100A | 1 | | Albero - Shaft | 1 | |
| 24 | C02213 | 1 | | O-ring - O-ring | 10 | |
| 25 | C02214 | 1 | | O-ring - O-ring | 10 | |
| 26 | 042Z04200A | 1 | | Piastra fissaggio - Fixing plate | 1 | |
| 27 | C02176 | 6 | | Vite - Screw | 10 | |
| 28 | 042Z25900A | 1 | | Guarnizione - Gasket | 1 | |
| 29 | 042Z04400A | 1 | | Piastra - Plate | 1 | |
| 30 | 042Z04000A | 1 | | Gruppo nodo - Junction group | 1 | |
| 31 | 042Z40800A | 1 | | (2.9Ah) - Batteria - Battery | 1 | |
| 31 | 042Z41100A | 1 | | (5.8Ah) - Batteria - Battery | 1 | |
| 31 | 042Z09000A | 1 | | (8.7Ah) - Batteria - Battery | 1 | |
| 32 | 042Z17800A | 4 | | Vite - Screw | 10 | |



Tav.
Tab.
Taf.

05

0

| Rif. | Code | Qt.in Robot | (IT) Descrizione * (GB) Description | MOQ |
|------|------------|----------------|--|-----|
| 1 | 042Z37200A | 1 | Coperchio posteriore - Back cap | 1 |
| 2 | C02172 | 8 | Vite - Screw | 10 |
| 3 | 042Z24500A | 1 | Fermacavo - Cable clamp | 1 |
| 4 | 042Z27300A | 1 | Chiusura base ricarica - Docking Station Closing | 1 |
| 5 | 042E00500A | 1 | Trasmittitore - Trasmittiter | 1 |
| 6 | C02224 | 4 | Vite - Screw | 10 |
| 7 | 042Z24800A | 1 | Gruppo contatti ricarica - Recharging contact group | 1 |
| 8 | 042Z44500A | 1 | Torretta base di ricarica - Docking Station Tower | 1 |
| 9 | 042Z24700A | 1 | Copertura box (Contatto) - Box Cap set (Contact) | 1 |
| 10 | C02244 | 3 | Vite - Screw | 1 |
| 11 | 042Z26500A | 1 | Box trasmettitore (Bianco) - Transmitter box (White) | 1 |
| 12 | 042Z43200A | 1 | Pianale di appoggio - Floor support | 1 |
| 13 | OWA60E30 | 1 | (2.0Ah) Caricabatteria - Battery Charger | 1 |
| 13 | ELG-150-30 | 1 | (5A) Caricabatteria - Battery Charger | 1 |
| 13 | ELG-240-30 | 1 | (8A) Caricabatteria - Battery Charger | 1 |